



# BROADWAY BOULEVARD | BEAUTIFICATION



HOBBY AREA DISTRICT

*Scenic* Houston



Prepared by Clark Condon Associates.

# OVERVIEW



TO DOWNTOWN

I-45

610

BROADWAY  
BLVD.

HOBBY AREA DISTRICT

AIRPORT  
BLVD.

WILLIAM P. HOBBY  
AIRPORT

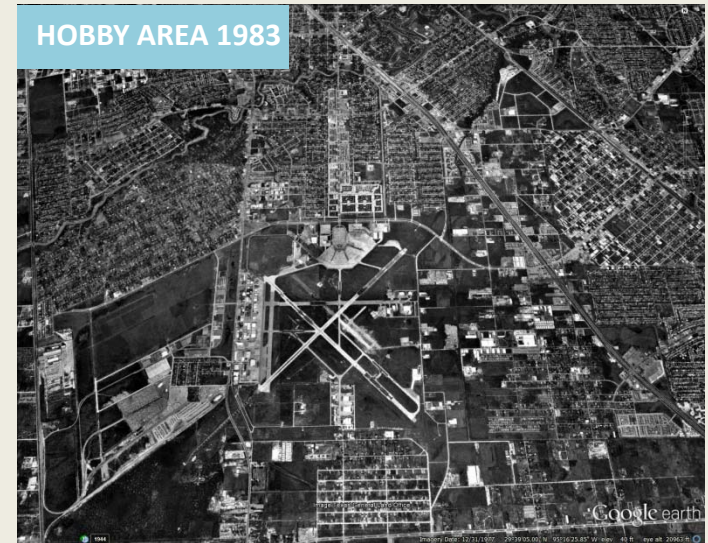
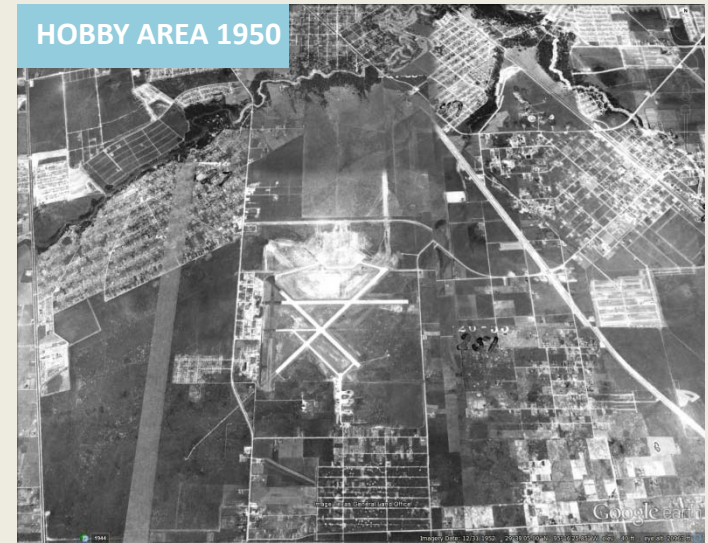
THE BELTWAY

TO GALVESTON



# HISTORY

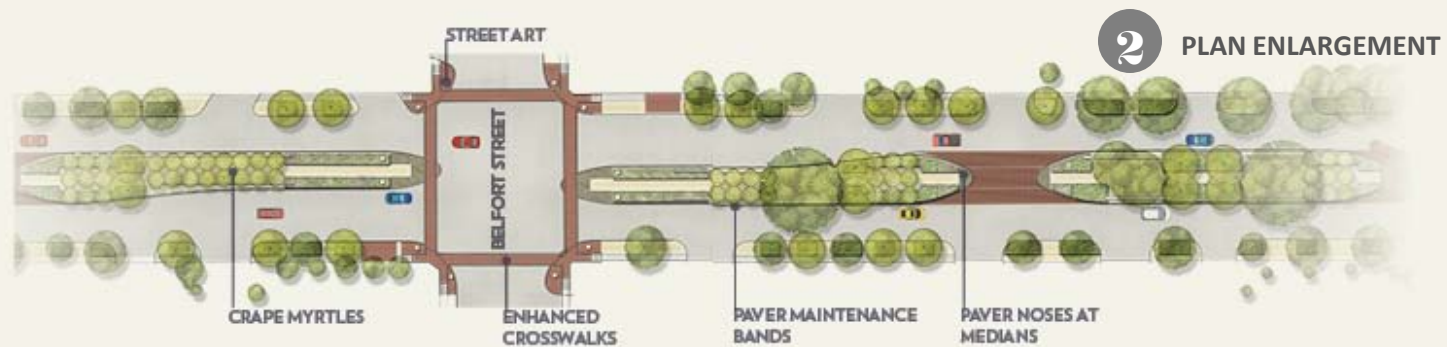
- 1937** Houston Municipal Airport established
- 1948** First segment of the Gulf Freeway was completed
- 1954** Development of Glenbrook Valley Neighborhood
- 1967** Houston Municipal Airport is renamed William P. Hobby Airport
- 2011** Glenbrook Valley designated an historic neighborhood (the first in the City of Houston)



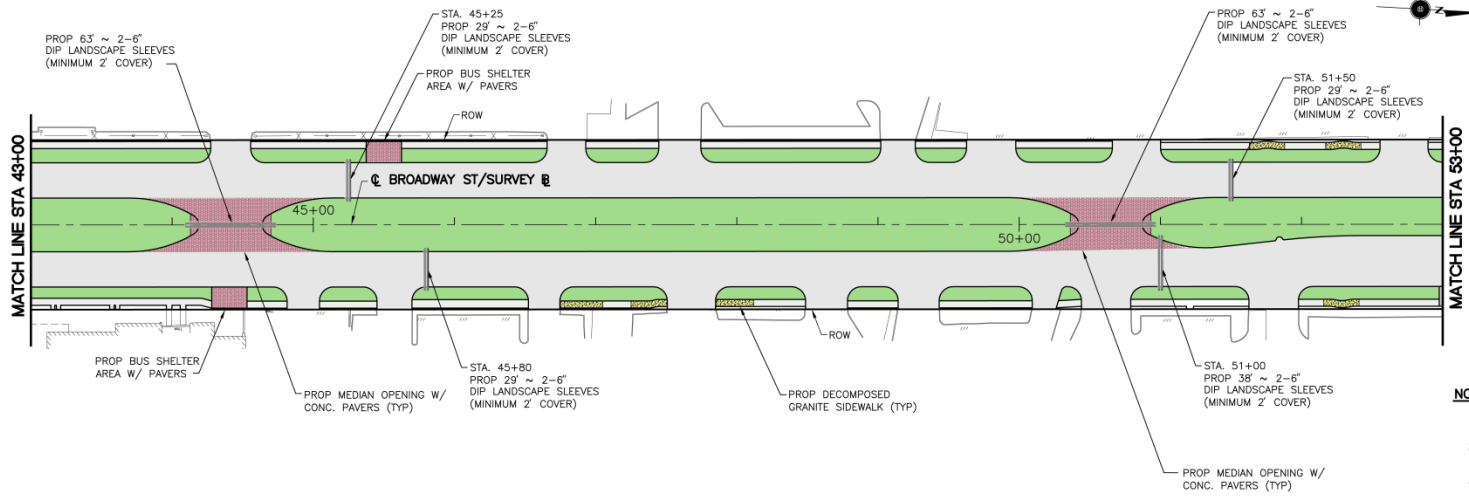
**TODAY**





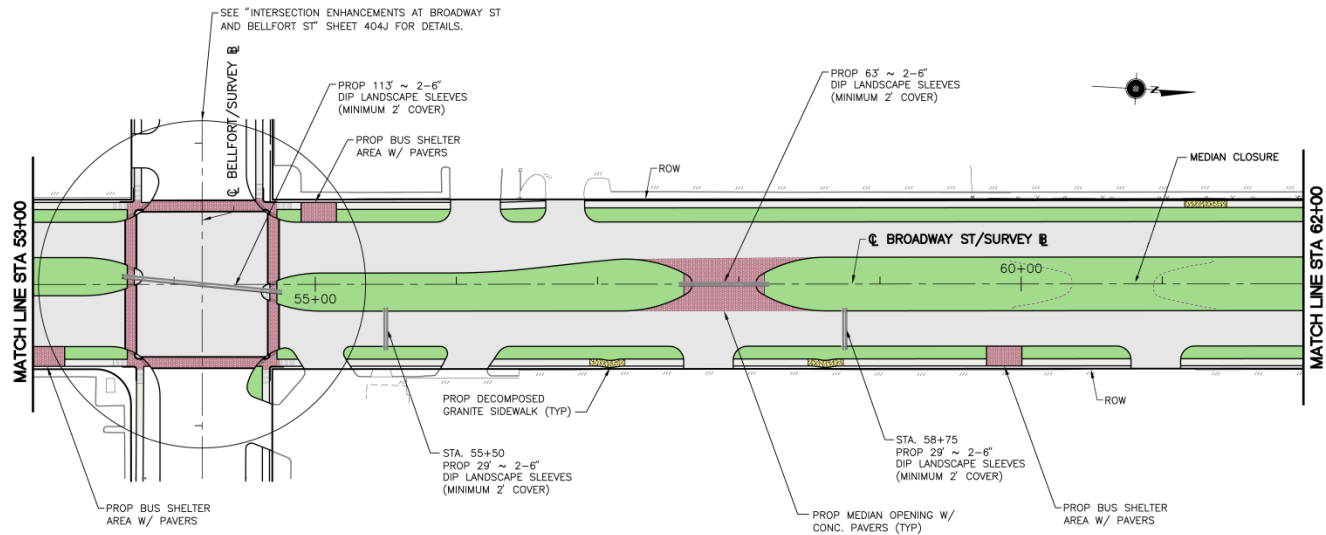


DESIGN



**NOTES:**

1. SEE "HORIZONTAL GEOMETRY LAYOUT" SHEETS FOR MORE INFORMATION.
2. REALIGN THE SIDEWALKS AS SHOWN. REFER TO SHEETS 404P & 404Q FOR DETAILS.
3. SEE "BUS STOPS WITH SHELTER" SHEET 404O FOR CONCRETE PAVER DETAILS.
4. LANDSCAPE SLEEVES SHALL BE EXTENDED AT LEAST 2 FEET BEYOND PAVED/PAVER AREA.
5. SEE "MEDIAN ENHANCEMENTS" SHEET 404R FOR CONCRETE PAVER DETAILS.
6. SEE "CONCRETE PAVER DETAILS" SHEET 404S FOR CONCRETE PAVEMENT DETAILS AT PAVER AREA.



DESIGN



# THE FUTURE



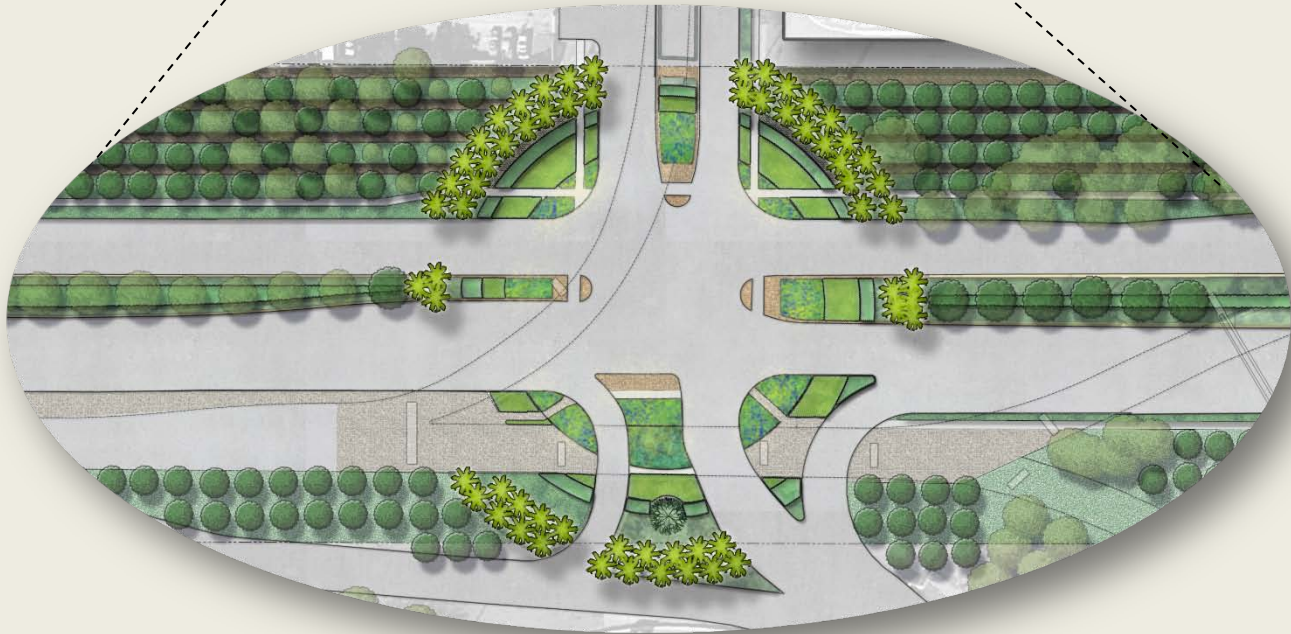
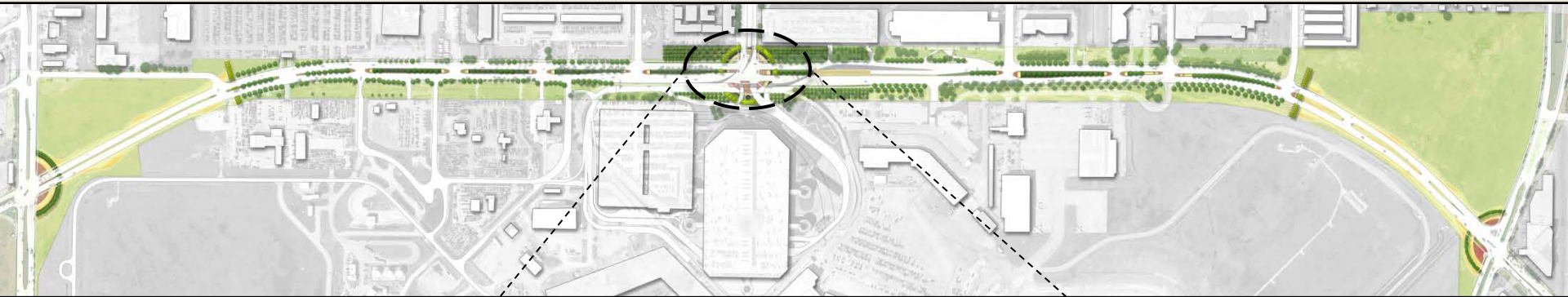




THE FUTURE



# AIRPORT BOULEVARD





# BROADWAY BOULEVARD

## Schedule:

Phase	Start Date	Targeted Completion Date
Master Plan Phase	July 2014	September 2014
Design Documentation Phase	October 2014	October 2015
City of Houston Permitting	November 2015	January 2016
Bidding & Procurement	February 2016	March 2016
Construction	April 2016	November 2016



# QUESTIONS?

